

The HIPICLAM system guarantee that the rider will never fall from his horse, except in case of fall of the horse or slipping saddle, the system immediately releases the rider.



Grupo  
**LAMBEA**

# HIPICLAM



## EASY INSTALLATION

It is fixed easily below the English saddle, adapting to each rider and horse quickly with a simple adjustment.



## THE SAFEST HORSE RIDING

Maintaining rider on the saddle while allowing freedom of necessary movements to practice correctly and naturally horse riding without restrictions. The rider is immediately released if the system detects a fall of horse or slip from the saddle.



## 5 YEARS OF RESEARCH TO DEVELOP THE UNIQUE ACTIVE SECURITY SYSTEM FOR HORSE RIDING HIPICLAM

This new technology has been subjected to numerous tests and with all types of situations/different conditions. The product was launched on the market after having passed all the tests with success.

Distributed by:

# Security systems for horse riding

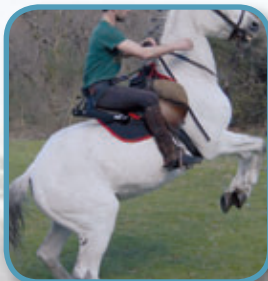


## A REVOLUTION IN THE EQUESTRIAN WORLD: OUR SAFETY BELT HIPICLAM TO HORSE RIDING ACTIVITIES

Current security systems (bombs, protective vest, airbag etc ...) are intended to reduce the impact of the blow when the rider falls.

### Our system aims of HIPICLAM is that the rider never falls.

The system with sensor detects a possible fall of the horse or a sliding saddle and releases the rider immediately.



### HIPICLAM is especially recommended for:

- Children at any time of learning.
- Adults beginners riding.
- Advanced riders wishing to limit the risks.
- Persons with reduced capacity for courses hippotherapy.
- Professional for stripping foals.
- Equestrian Touring.

### The HIPICLAM system has passed several tests successfully

#### 1 Security system Hipiclam

It manufactures with high quality material, which makes it highly reliable, safe and durable. Its use is very simple that installs and withdraws with ease and speed.

#### 2 Development and product manufacturing

The guidelines that have been followed are based on the comfort of the rider and the horse and the natural practice of riding without any discomfort.

#### 3 Hipiclam, an exclusive product for safety in practicing horse riding activities

The active safety system **HIPICLAM** is manufactured exclusively and under a patent pending worldwide.

### The HIPICLAM system consists of:

- Three pieces
- Three technologies
- Three functions

### The whole forms equipment: Structure, pin-sensor, harness.

On 2 sides, there are two moving parts to crocher the carabiner on the harness, and on the lower part there is a ring for the forehead support of the structure.

On the front, is the activation button and manual opening system that can be pressed at any time when the rider wants to be free of his horse. On the top, there is a signal light that flashes when the battery is low.



### THE STRUCTURE: A HINGED RIGID SUPPORT

Its function is to allow to practice horse riding as naturally as possible and without any discomfort for horse or for the rider. The structure is part of a saddle pad specially developed, removable, protects the horse from direct contact and are only visible to the belt fastene.

## HARNESS IS A BELT OF FASTENING STRAPS ADJUSTMENT

The straps are attached to the side of the rider by adjusting the setting position and preventing the rider to move beyond the "limitations" that cause an imbalance and / or a fall while allowing freedom of movement to horseback riding.

On the back there is the articulated arms of the structure thanks to 2 adjustable straps length. The harness has the ends of two steel hooks to hang the front casing to close the set as the buckle of a belt.

## THE BOX SET-BUFFER: ALL "INTELLIGENT" AND MOST OF HIPICLAM SYSTEM

The components are united with an extendable cable that transmits data and power.

- **The sensor:** it is a plastic cylindrical capsule, which contains inside the sensors (gyroscope and accelerometer) that determine the position, speed and horse-accelerated.

This buffer is located within the structure, thus being protected against impacts and in close contact with the horse's movement to ensure correct detection of different parameters to be taken into account.

- **The case:** inside there is a small computer that processes data from sensors, opening and closing systems for electro-magnets, a series of mechanical components and the batteries that power the system.

